



Uniting the People and
Technology that Move the World.

Network. Applications. Community.

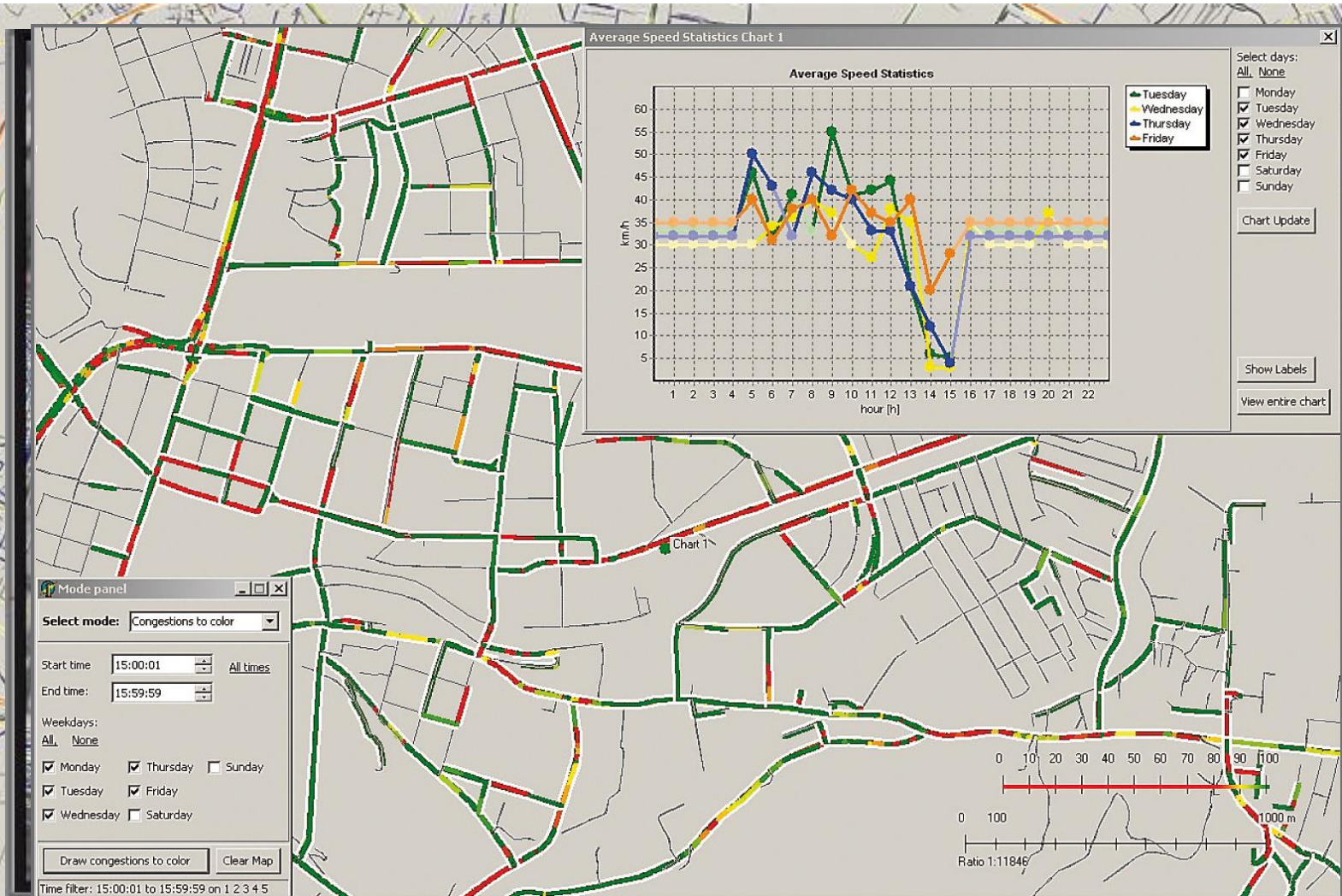


Routing Scheduling and Mobile Solutions

Real-Time Traffic Data



Real-Time Traffic Data



Routing, Mobile & Telematics



Descartes Routing, Mobile & Telematics

Descartes Routing, Mobile & Telematics solutions deliver optimized route planning, dispatching and GPS tracking, mobile applications, telematics, fleet/driver, compliance, and performance analytics optimizing the use of assets and people involved in the movement of goods through:

- Route Planning (typical savings 10-30%)
- Route Execution (making sure plan is respected)
- Mobile Applications (PoD – saving 1EUR per stop)

WinRoute Speed Profiles

The screenshot displays the WinRoute 7.3 interface. The main window shows a map of Croatia with a route highlighted in pink. The route starts in UNACKA, goes through PRUDI, and ends in TRNJANSKI NASIP. The map is divided into regions: UNACKA, USORSKA, STAROTRNJANSKA, and TRNJANSKI NASIP. The PRUDI region is further divided into PRUDI, PRUDI 4, and PRUDI 1.

The right-hand panel is titled "Speed" and contains the following settings:

- Profiles:** Use speed profiles
- Max Speed On Road:**

Type 1: 88	Type 5: 30
Type 2: 86	Type 6: 20
Type 3: 68	Type 7: 13
Type 4: 40	Type 8: 6
- Prefer routes that are:**

Short	Fast	100.1
Local	Major	0.40
- Penalty on urbanisation:**

Level 1: 800	reduce speed to:	85 %
Level 2: 1575	reduce speed to:	60 %
- Allow use of following road types:**
 - Ferries
 - Toll Roads
 - Deliveries Only
 - Pedestrian Only
- Specific Distribution Models:**
 - Door-to-door distribution model
 - Special door-to-door speed: 4.50
 - Process both sides of street simultaneously
- Regular Distribution Model:**

Same locations:	00:01	hh:mm	and	0.00	km
Min Travel:	00:01	hh:mm	and	0.00	km
- Traffic Congestion:** A line graph showing speed reduction over 24 hours. The y-axis represents speed (0-100) and the x-axis represents time (0-24). The speed starts at 100, drops to approximately 40 at hour 8, and then gradually returns to 100 by hour 24.

Buttons: Apply, Reset, Export Matrix

Bottom status bar: Orders: 0 / 222 (238) Vehicles: 0 / 38 Routes : 0 / 38 Cost: 0.00 Time: 00:00 0 km

WinRoute Speed Profiles

The screenshot displays the WinRoute 7.3 interface. The main window shows a map of Zagreb, Croatia, with a network of roads and a river. The configuration panel on the right is titled "Speed" and contains the following settings:

- Profiles:**
 - Use speed profiles
 - Max Speed On Road: Type 1: 88, Type 2: 86, Type 3: 68, Type 4: 40, Type 5: 30, Type 6: 20, Type 7: 13, Type 8: 6
 - Prefer routes that are: Short (Fast 100.0), Local (Major 0.40)
 - Penalty on urbanisation: Level 1: 800 (reduce speed to: 85%), Level 2: 1575 (reduce speed to: 60%)
- Allow use of following road types:**
 - Ferries, Toll Roads
 - Deliveries Only, Pedestrian Only
- Specific Distribution Models:**
 - Door-to-door distribution model
 - Special door-to-door speed (4.50)
 - Process both sides of street simultaneously
- Regular Distribution Model:**
 - Same locations: 00:01 hh:mm and 0.00 km
 - Min Travel: 00:01 hh:mm and 0.00 km
- Traffic Congestion:** A line graph showing speed profiles over 24 hours. The y-axis represents speed (0-100) and the x-axis represents time (0-24). Two lines (red and blue) show a dip in speed during the day (around 7-19 hours).

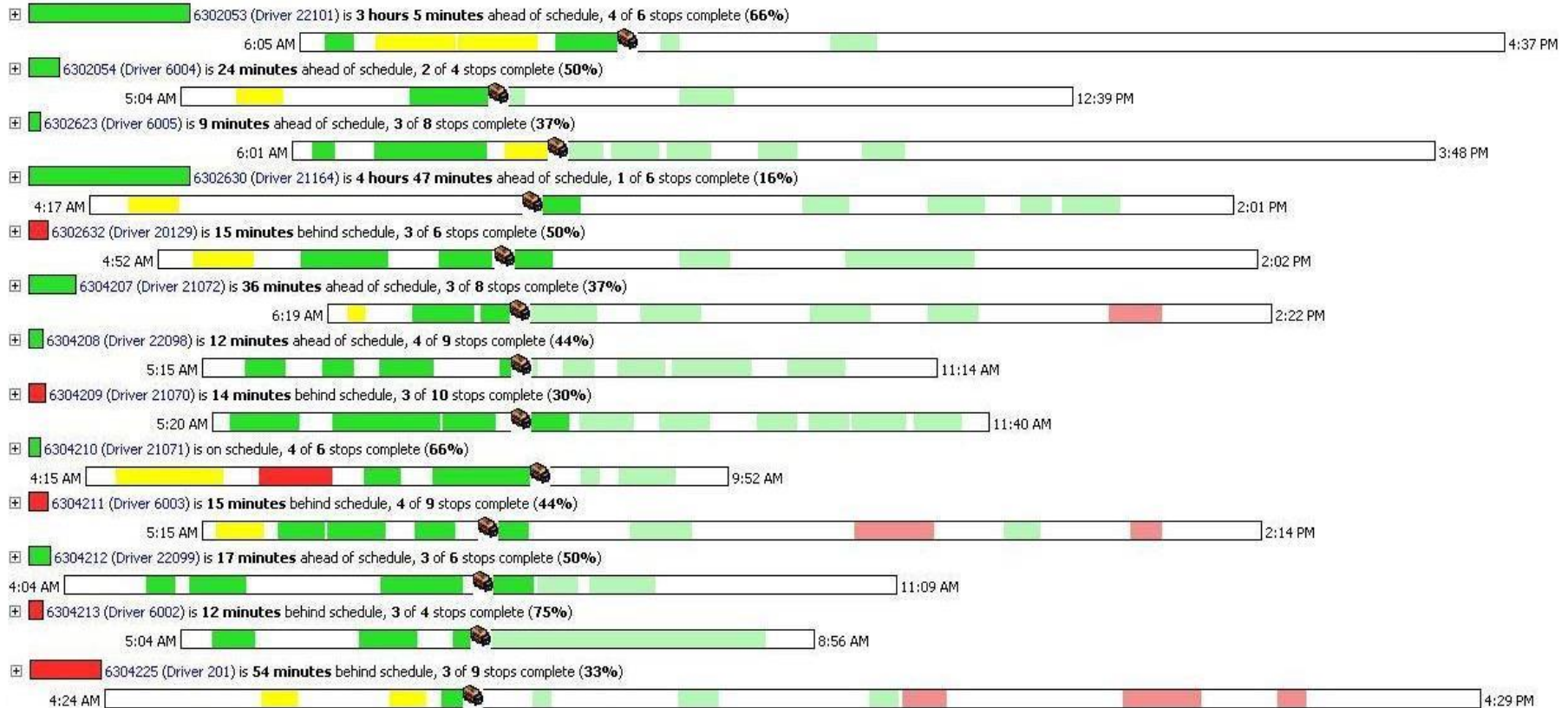
Buttons: Apply, Reset, Export Matrix

Bottom status bar: Ready, Orders: 0 / 222 (238), Vehicles: 0 / 38, Routes: 0 / 38, Cost: 0.00, Time: 00:00, 0 km, 15:22 18.6.2014

Descartes Route Execution - Real Time

6304225 6304213 6304212 6304211 6304210 6304209 6304208 6304207 6302632 6302630 6302623 6302054 6302053

Show DC Stops

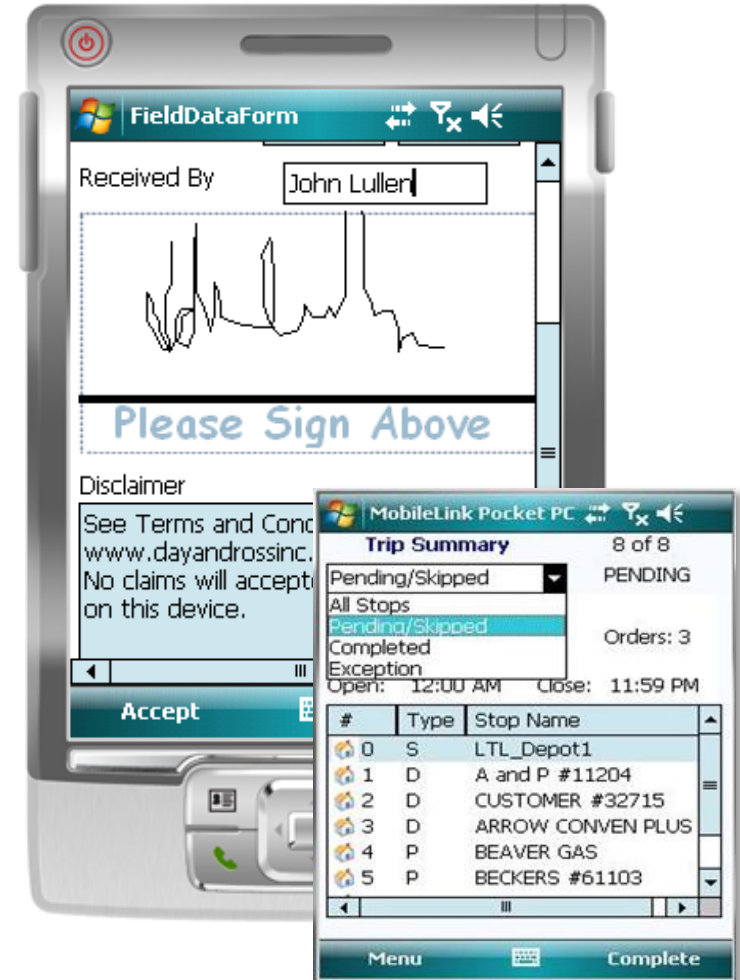
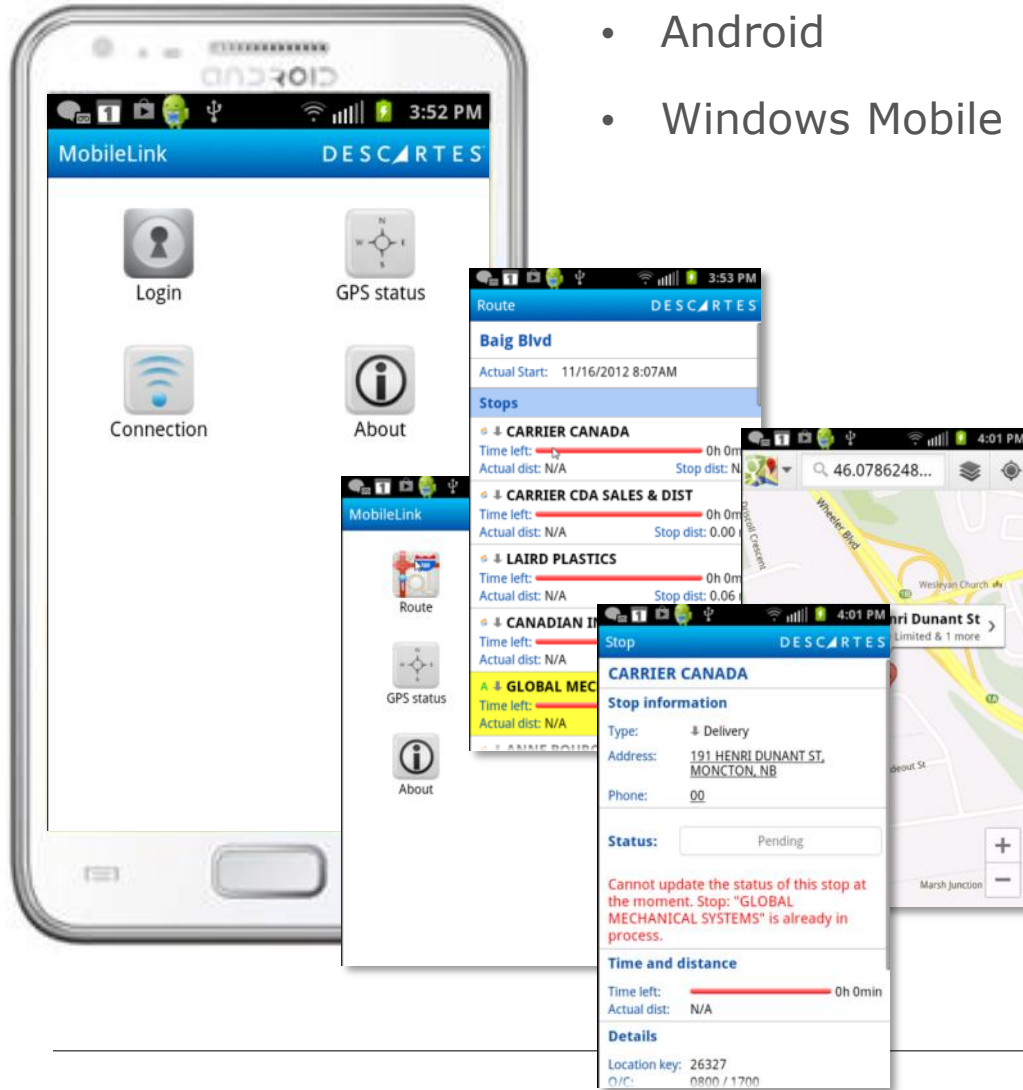


Copyright 2008 Descartes Systems Group. All Rights Reserved.

Real time dispatch view - command center

MobileLink App: Android & Windows Mobile

- Android
- Windows Mobile



WinRoute European References



DESCARTES™